

# SMART LAB 35

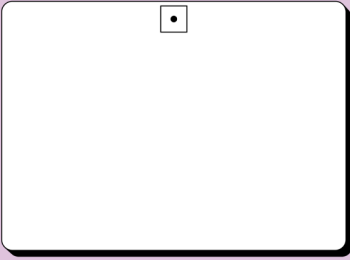
## Smart Enlarger 35 Quick Start Manual

### WELCOME TO THE WORLD OF ANALOG PRINTING

With your Smart Enlarger 35, you now have a powerful tool to bring your negatives to life. This guide will help you get started quickly – from unboxing to your first print.

## THATS INSIDE YOUR BOX

GROUNDPLATE



ENLARGER STAND



MACRO-ADAPTER



LENSMOUNT



LIGHTSOURCE



ENLARGER HEAD



BASEPLATE-SCREW



CLAMP-SCREW



CAP

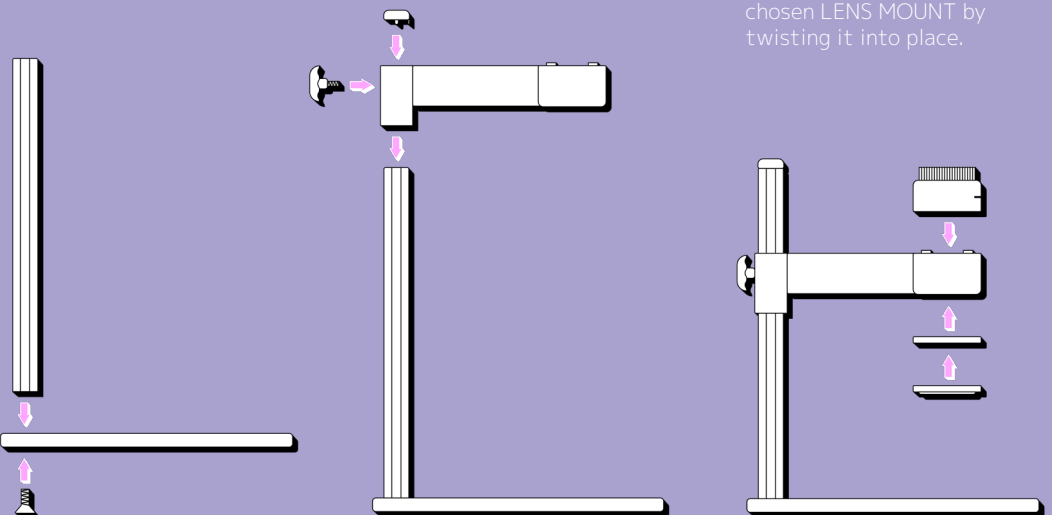


## ASSEMBLY INSTRUCTIONS

**1.** Attach the ENLARGER STAND by using the BASEPLATE-SCREW.

**2.** Slide the ENLARGER HEAD onto the ENLARGER STAND and secure it from the back with the CLAMP SCREW. Place the CAP on top of the ENLARGER STAND.

**3.** Place the LIGHTSOURCE onto the ENLARGER HEAD – magnets will help position it correctly. Optionally, attach the MACRO ADAPTER to the bottom of the ENLARGER HEAD. Finally, mount your chosen LENS MOUNT by twisting it into place.



# GET THE APP

SMART  
LAB  
35



GET IT ON  
Google Play



Download on the  
App Store

## FROM NEGATIVE TO PRINT



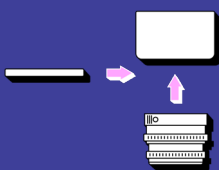
### 1. Power Up

Connect your Smart Enlarger to a USB-PD charger (minimum 9V / 1A required).



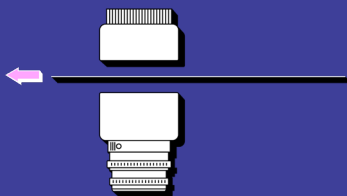
### 2. Connect via Bluetooth

Open the app and tap the + symbol in the upper right corner. Select your Smart Enlarger from the list to pair it. In the settings, choose your paper type and other preferences.



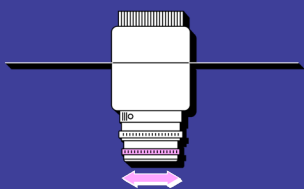
### 3. Mount Your Lens

Attach your preferred lens to the enlarger. For 35mm film, we recommend a 50mm lens. Other lenses may require a macro ring.



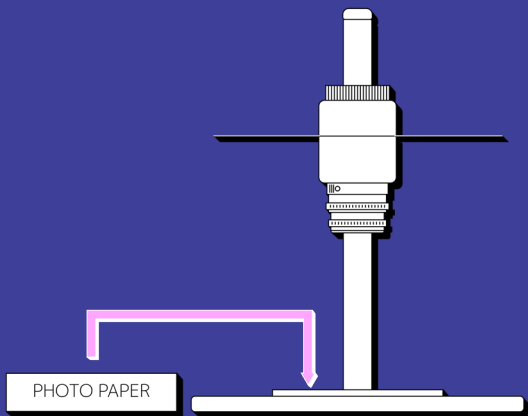
### 4. Insert Your Negative

Lift the light source and place your film negative in the guidance rails. Lower the light source back – magnets will secure it in place.



### 5. Focus & Magnify

Switch on the focus light in the app. Adjust the magnification by moving the light head up or down. Use a macro ring if needed. Focus using your lens.



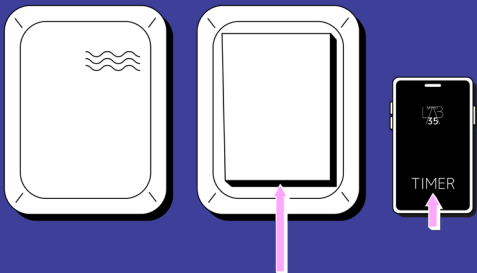
### 6. Insert Photo Paper

Use the safelight to position your paper and define the image frame.



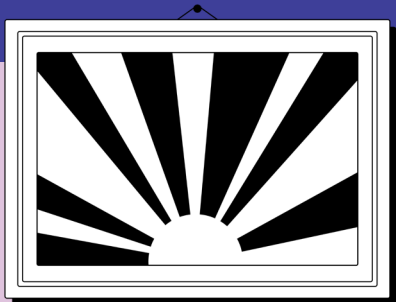
### 7. Start Exposure

Set the exposure time, gradation and light intensity in the app. The timer will count down and control the exposure automatically.



### 8. Develop Your Print

Place the exposed photo paper in the developer as specified.



### 9. Enjoy & Share!

Hang your first self-developed print on the wall and enjoy your creation! Share your photo on Instagram with **#backtolab** and tag us **@smartlab35** to showcase your art to the world!